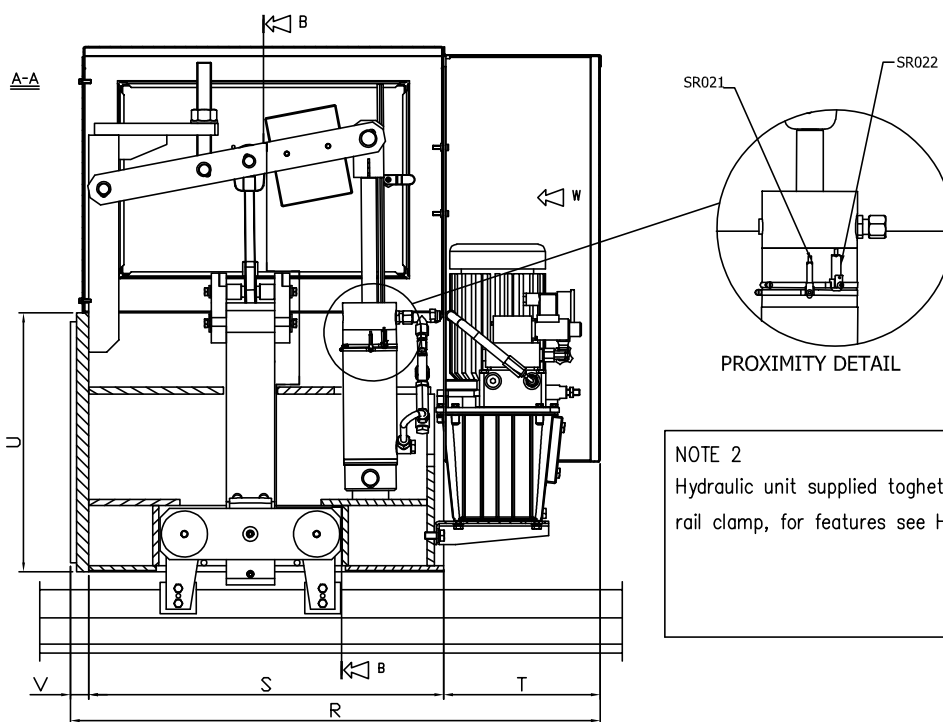


**NOTE 1**  
 Rail hardness between 200 and 270 HB  
 ( $\sigma = 70 \div 90 \text{ daN/mm}^2$ )  
 In case of different values we must be informed at order because this could affect the rail clamp functioning.

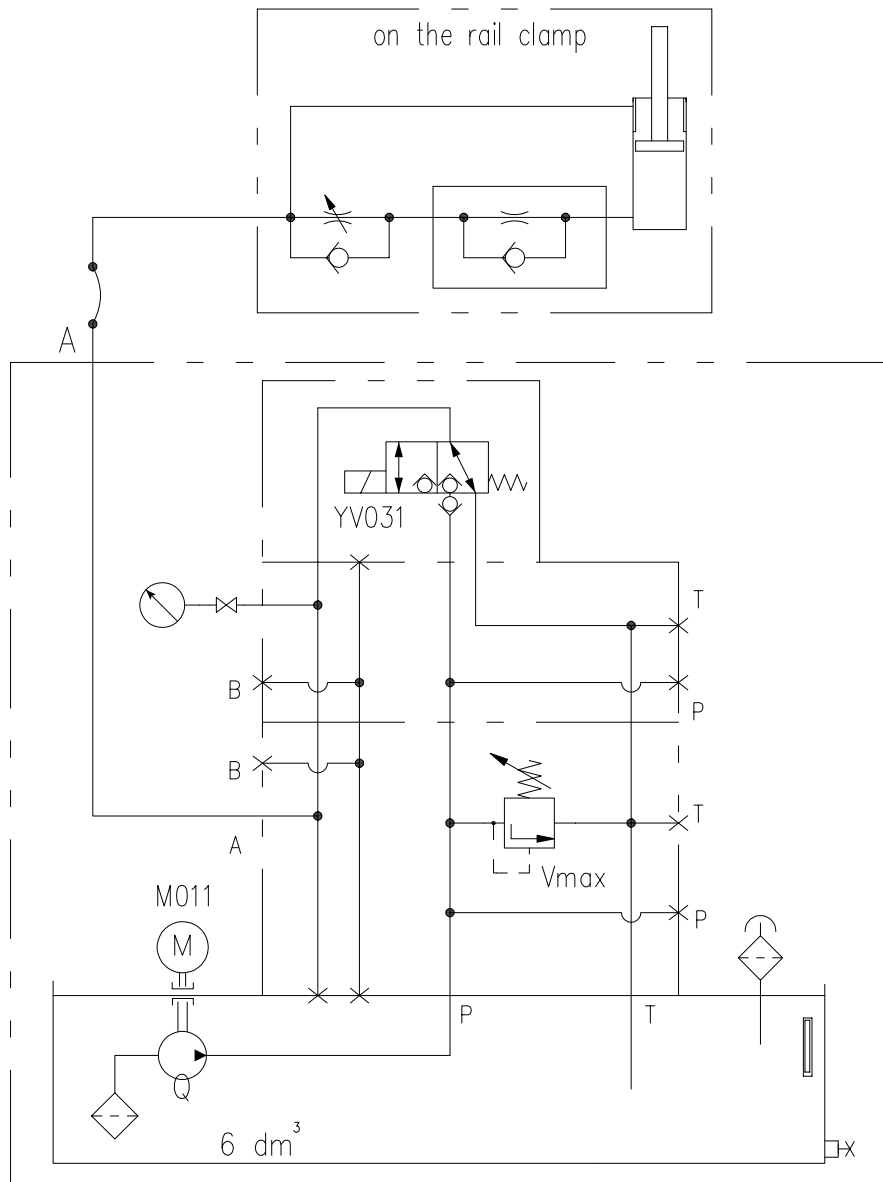


**NOTE 2**  
 Hydraulic unit supplied together with the rail clamp, for features see HPU data sheet

FORCES AND DIMENSIONS INDICATED ARE REFERRED TO MAXIMUM HEAD WIDTH OF RAIL 120 mm.  
 FOR RAIL WITH HEAD WIDTH GREATER THAN 120 mm PLEASE CONTACT OUR TECHNICAL OFFICE

(\*) VARIABLE WITH VERTICAL FLOAT  
 (\*\*) CONNECTION SCREWS CLASS :10.9 ARE TO BE FORESEEN  
 All dimensions in mm  
 Alterations reserved without notice

TYPE	FORCE (kN)	A	B	C	D	E	F	G	H	I	L	M
DBSZA20-250-A	250	567	540	480	241	10	40	35	30	110	80	100
DBSZA30-400-A	400	640	630	550	251	10	40	40	30	110	80	110
DBSZA40-700-A	700	700	700	605	273	10	40	40	30	120	90	120
DBSZA50-1000-A	1000	858	770	655	293	10	40	40	30	120	90	130
DBSZA60-1500-A	1500	1038	930	800	416	10	40	45	30	145	115	205
TYPE	M1	N	P	Q **	R	S	T	U	V	WEIGHT(kg)		
DBSZA20-250-A	100	873	903	N°8 $\phi 26$ (M24)	880	620	260	430	30	350		
DBSZA30-400-A	110	960	990	N°8 $\phi 30$ (M27)	955	695	260	470	30	450		
DBSZA40-700-A	120	1062	1092	N°8 $\phi 36$ (M33)	1025	765	260	510	35	660		
DBSZA50-1000-A	130	1062	1092	N°8 $\phi 42$ (M39)	1135	875	260	550	45	890		
DBSZA60-1500-A	150	1213	1243	N°8 $\phi 52$ (M48)	1300	1065	235	710	45	1550		



No.	Item
M011	Electric motor
Q	Gear pump
Vmax	Pressure relief valve
YV031	Electrovalve

TYPE	* M011 ( kW)	Q ( l/min) ( cm3/rev)	Vmax ( MPa)	* YV031	P	Weight ( kg)
SCI-DBSZA06	0,75 400V-50Hz	2,3 1,6	20	24V DC-30W	G1/4"	28

**\* = OTHER FEEDING VOLTAGE ON REQUEST**  
**HYDRAULIC UNIT FOR ALL TYPE OF SELF BLOCKING RAIL CLAMPS**